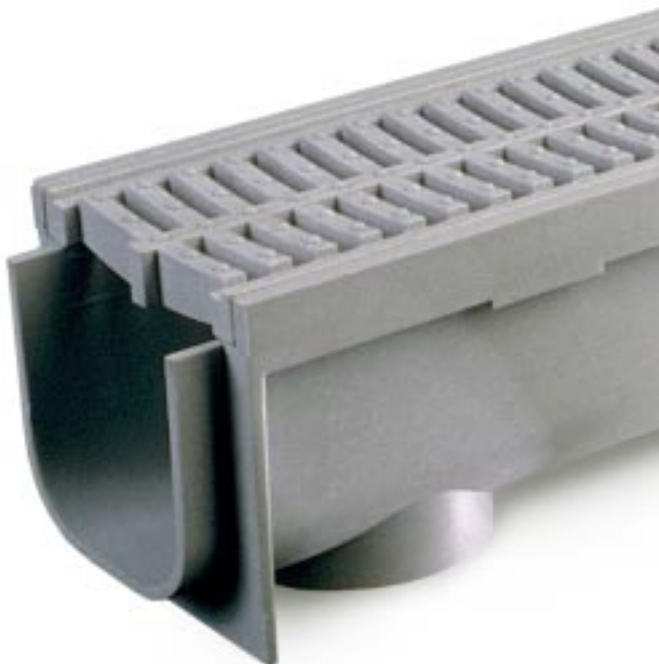


- Lightweight,*
- practical,*
- drainage*
- solution*
- Attractive polyethylene grate is durable, lightweight, UV resistant and easy to maintain
 - Smooth channel surface is easy to clean
 - End Cap/Outlet Cap available
 - Interlocking end profiles make installation quick and easy
 - Special anchor slot on bottom of drain to allow installation device to be connected to channel allowing for in-ground installations and secures channel during concrete pour.
 - Discharge outlet molded to base of channel for vertical outlet use
 - SecureFit™ grate locking system

Available from



HomeDrain



Home and garden solutions

from the world's largest

surface drainage company

 **ACO Polymer Products Inc.**
 12080 Ravenna Road
 PO Box 245
 Chardon, OH 44024
 Tel: (440) 285 - 7000
 Fax: (440) 285 - 7005
 Toll Free: (800) 543 - 4764
<http://www.acousa.com>



4" wide, light duty drain system

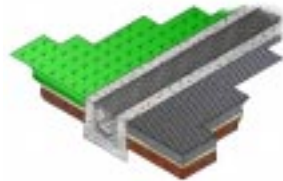
HomeDrain is a practical, lightweight drainage system for use in light duty areas around the home and garden.

The **HomeDrain** system is easy to install. It's available with end caps and bottom outlets to provide easy run-off for the water collected.

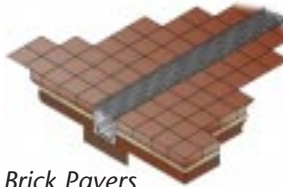
HomeDrain is strong enough to cope with slow moving vehicles and is the perfect answer around patios, swimming pools, barbecue areas, tennis courts, and in front of garage doors.

Installation

Can be used:



In-Concrete Driveways



Brick Pavers Patio

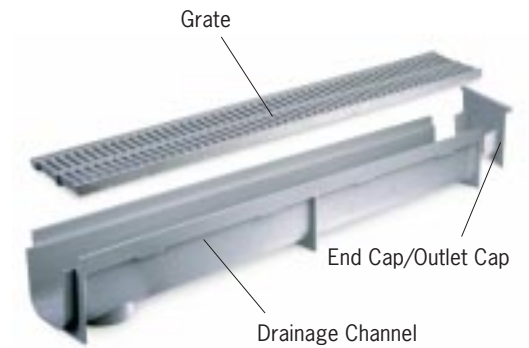


In-Ground

- 1 Prepare a trench and fix a line along the trench at the required finished height. If channel will be exposed to vehicles, embed trench drain in good quality concrete.
- 2 Position outlet channel in the trench bed and ensure that it is level. Connect the outlet pipe to the drain.
- 3 Lay the remaining channels and fit end caps.
- 4 Position grates in channel and backfill with surrounding materials.
- 5 Ensure that finished paving is about $\frac{1}{8}$ " higher than the grates to assist drainage into the channel.



HomeDrain System Components



| Product | Length | Width | Depth |
|---------------------------------------|--------------------|-------|-------------------|
| One meter drainage channel with grate | 39 $\frac{3}{8}$ " | 4" | 4 $\frac{5}{8}$ " |