



If you like the idea of studying at a college where the programs are challenging, the professors genuinely care about their students, and the environment is clean, safe, and beautiful, a visit to St. Andrews is definitely in order. When you schedule your visit we will arrange for you to meet with a professor, answer your questions, and talk with you about your college plans.



**Office of Admissions**  
 1700 Dogwood Mile  
 Laurinburg, NC 28352

800/763-0198 (toll free)  
 Fax: 910/277-5087

Email: [admissions@sapc.edu](mailto:admissions@sapc.edu)  
 Website: [www.sapc.edu](http://www.sapc.edu)

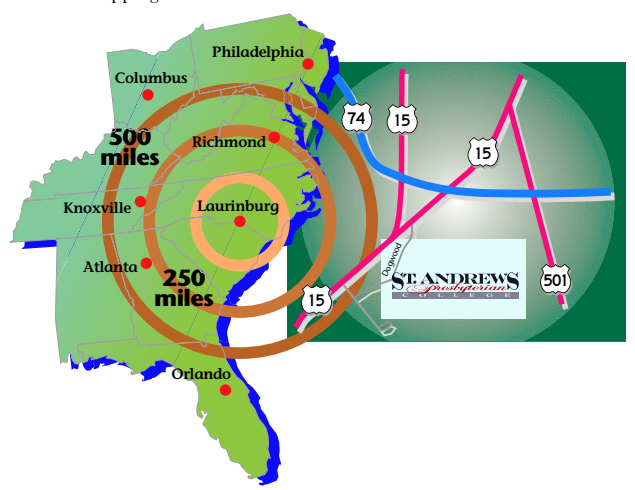
**Driving Directions:**

From the north: Take I-95 South and then U.S. 74 West into Laurinburg (about 30 miles). Take the St. Andrews College exit. Turn right off the ramp, go left at the second light (Lauchwood Drive), and immediately turn right onto the campus.

From the east: Take U.S. 74 West into Laurinburg and take the St. Andrews College exit. Turn right off the ramp, left at the second light (Lauchwood Drive), and right (immediately) onto the campus.

From the south: Take I-95 North and then U.S. 501 North (Exit 1) into Laurinburg. Follow the hospital signs and then turn left onto Lauchwood Drive. The campus is on your left across from Holly Square Shopping Center.

From the west: Take U.S. 74 East into Laurinburg and follow the signs to St. Andrews. Turn right off the exit ramp and left at the third light onto the campus.

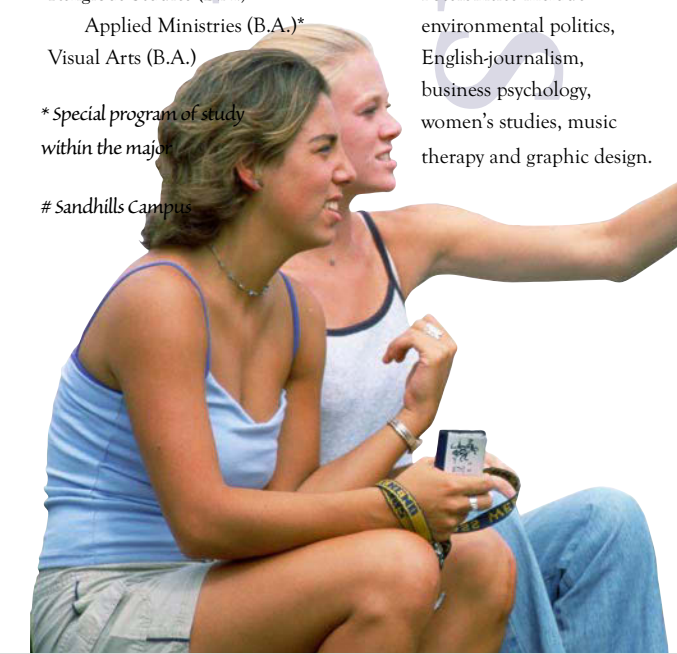


- Departmental Majors**
- Biology (B.A. and B.S.)
  - Business Administration (B.A.)
    - Concentrations: Accounting, Economics, Finance, Management, Marketing
  - Equine Business Management (B.A.)\*
  - Sports Management (B.A.)
  - Therapeutic Riding (B.A.)\*
  - Chemistry (B.A. and B.S.)
    - Biochemistry (B.S.)\*
  - Creative Writing (B.F.A.)
  - Education (B.A.)
    - Elementary K-6 (B.A.)
    - Physical Education K-12 (B.A.)
  - English (B.A.)
  - History (B.A.)
  - Mathematics (B.A. and B.S.)
    - Computer and Information Science (B.S.)\*
  - Philosophy (B.A.)
  - Politics (B.A.)
  - Psychology (B.A.)
  - Religious Studies (B.A.)
    - Applied Ministries (B.A.)\*
  - Visual Arts (B.A.)
- \*Special program of study within the major*
- # Sandhills Campus*

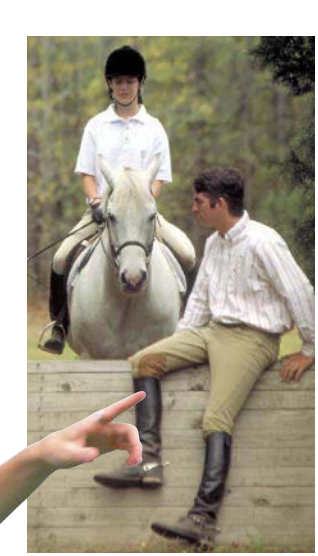
- Interdisciplinary Majors**
- Applied Social Sciences (B.A.)#
  - Asian Studies (B.A.)
  - Communications and Theatre Arts (B.A.)
  - Exercise Science (B.S.)
  - International Business (B.A.)
  - Liberal Arts (B.A.)
  - Therapeutic Riding (B.A.)
  - Sport (B.A.)
  - Psychoremedial Education (B.A.)\*

- Pre-Professional Studies**
- to prepare for careers in:
- Accounting
  - Pre-Dentistry
  - Pre-Engineering (3-2)
  - Pre-Law
  - Pre-Medicine
  - Pre-Physical Therapy
  - Pre-Veterinary Medicine
  - Theology

- Contract Majors**
- Contract majors allow you to shape your major around your interests. Possibilities include environmental politics, English-journalism, business psychology, women's studies, music therapy and graphic design.



**ST. ANDREWS**  
*Presbyterian*  
**COLLEGE**



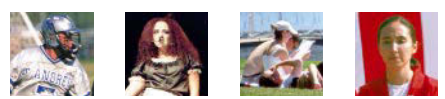
there's  
 more.  
 let's  
 talk.

**St. Andrews**  
**College**  
 at a glance

St. Andrews College was founded in 1855 and has provided a quality liberal arts education for over 140 years. Our goal is to prepare each student with the intellectual flexibility necessary for success in today's diverse marketplace.

With a student to teacher ratio of 12:1, our instructors get to know each student personally. This allows each student to achieve their individual maximum potential. This is one of the reasons that 90% of our graduates are placed in jobs of their chosen fields with a number of them going onto more advance degrees.

- Location**  
 ??? County,  
 Laurinburg, NC
- Enrollment**  
 700 men and women in undergraduate and graduate programs
- Areas of Study**  
 Liberal Arts, Fine Arts, Equine Studies, Graduate Programs
- Housing**  
 St. Andrews College provides housing in four dormitories
- Financial Aid**  
 Scholarships, grants, loans, payment plans and



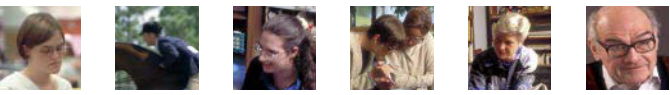
claim  
 your  
 future

*"St. Andrews is about diversity, relationships, opportunity, and growth."*

*"My courses challenged me, broadened me, and fueled my growing passion."*

*"St. Andrews aims to instill a passion for lifelong learning in every student."*

.com



Choose from twenty

departmental and

interdisciplinary majors,

contract majors and

a variety of

pre-professional

programs.



St. Andrews challenges you to think. Understanding other people's ideas, including those of the great thinkers of the past is important here, but figuring out what you think about the world and your experiences will be your ultimate goal. To help you achieve that goal, we'll provide you with excellent professors in small, challenging classes.

Then there's SAGE, our nationally acclaimed St. Andrews General Education program. Forget everything you've heard about college core courses. SAGE is interactive and exciting. Among other things, it features interdisciplinary exposure to issues and ideas related to world cultures, the sciences, and quantitative reasoning. The emphasis is on thinking, writing, and discussion.

St. Andrews offers well-designed academic programs in business, science, education, equine studies, the liberal arts, and more. Pre-professional programs are available in several areas including law and medicine. Other programs allow you to design your own major or to combine courses from several disciplines to meet your personal and career goals.

### Clubs & Organizations

- Alpha Chi Honor Society
- Art Club
- Black Student Union
- Breaking the Mirror Women's Forum
- Business Club
- Cairn Literary Magazine
- CHAOS (Chemistry and Other Sciences Club)
- Christian Student Fellowship
- College Republicans
- Debate Society
- Eco-Action
- Extravaganza Core
- Fellowship of Christian Athletes
- Highland Players
- History Club
- Lamp and Shield (Yearbook)
- Lance (Newspaper)
- Law Club
- Math/Computer Science Club
- Model United Nations
- Pathways
- Pi Gamma Mu Social Sciences Honor Society
- Psychology Club
- Rugby Club ("The Rhinos")
- St. Andrews Honor Society
- Student Activities Union
- Student Athletic Trainers' Association
- Student Government Association
- Symposium Philosophy/Theology Club
- Tri-Beta Biology National Honor Society
- World Cultures Society
- Writers' Forum
- Young Democrats



# Tidbits & Facts

## Sports

### Men's teams

Baseball

Basketball

Cross Country

Golf

Lacrosse

Soccer

Tennis

### Women's teams

Basketball

Cross Country

Soccer

Softball

Tennis

Volleyball

**Type of School** — Private, four-year liberal arts college affiliated with the Presbyterian Church (USA).

**Accreditation** — Fully accredited by the Southern Association of Colleges and Schools.

**Residence Life** — Eight residence halls, including one in which 24-hour attendant care is available for students who have physical disabilities. Most students live in self-governing suites of six or seven rooms.

**Activities** — Campus clubs and organizations of all kinds, including Student Government, Black Student Union, campus publications (newspaper, yearbook, literary magazine), Eco-Action, drama, Model U.N., rugby club, chorale, Japanese Festival Ensemble, Bagpipe Band, Christian Student Fellowship, and World Cultures Club. Also: movies, parties,

dances, athletic events, performing artists, comedians, coffeehouse entertainment, and novelty/variety shows. Traditional spring event: Extravaganza.

**Athletics** — NCAA Division II. Women compete in basketball, cross country, soccer, softball, tennis and volleyball. Men compete in baseball, basketball, cross country, golf, lacrosse, soccer, and tennis. The equestrian team is co-educational and has been the ANRC national champion or reserve champion for several years.

**Financial Aid** — St. Andrews offers generous merit-based as well as need-based aid from federal, state, institutional and private resources.

**Tartan** — The St. Andrews blue tartan was designed for Great Britain's King George VI, Earl of St. Andrews.

**Students-to-faculty ratio** — 12:1

**Classes with under 20 students** — 75%

**Classes with more than 50 students** — 0%

**Faculty members holding doctorate or other terminal degree** — 89%

**Over the last 4 years graduates that were employed or enrolled in graduate or professional programs six months after graduation** — 98%

**Size of campus** — 640 acres

**Size of campus lake** — 70 acres

**Size of main science lab** — 20,000 sq. ft.

**Tuition, 1999-00 academic year** — \$13,515

**Room and board** — \$5,300

**Population of Laurinburg** — 17,500

**Average annual temperature** — 63.6°F

**Average January temperature** — 49.3°F

**Average June temperature** — 77.1°F

**Average annual snowfall** — 1.9 inches

St. Andrews Presbyterian College prohibits discrimination in all aspects of its operation. St. Andrews offers admission to students without regard to race, handicap, color, sex, age, national and ethnic origin, creed, and religion. All students admitted to St. Andrews have equal access to the College's financial assistance, facilities, activities, and various programs.



**Office of Admissions**  
1700 Dogwood Mile  
Laurinburg, NC 28352

800/763-0198 (toll free)  
Fax: 910/277-5087

**Email:**  
admissions@sapc.edu

**Website:**  
www.sapc.edu

